



125AMPS TP&N SURGE PROTECTION DISTRIBUTION BOARD



LIVE ELECTRICAL DISTRIBUTION UK LTD

4 Queensmead Place, Textilose Road, Manchester, M17 1PH
Tel: 0161 8702592 Web: www.liveelectrical.co.uk
E-mail: sales@liveelectrical.co.uk



Ensure that these instructions are made available to the end user for future reference.

125AMPS TP&N SURGE PROTECTION DISTRIBUTION BOARD

These instruction should be read full and retained after installation for future reference Installation instruction.

1. This unit must be installed by a qualified electrician (skilled person) in compliance with current requirements for Electrical Installations (IET Wiring regulations BS7671).
2. Ensure that all power supplying this equipment is Isolated before working on or inside the unit.
3. Make sure all devices, covers and doors are replaced and secured before energizing the power supply to the unit.
4. Remove the gland plates prior to slotting or cutting for cable entries to avoid ingress of swarf & other debris.
5. The SPD protecting the board must not exceed the rating of the incoming main switch or RCCBs or any additional limitation.
6. This unit is only suitable for indoor use.
7. This unit and internal components have been tested to the following standards: Distribution Board: EN61439-3 MCBs: EN60898 RCCBs: EN61008-1 RCBO: EN61009-1 Main Switch: EN60947-3
8. Before fitting the front cover ensure that all connections (including factory connections) are tight - DO NOT USE POWER TOOLS TO TIGHTEN CONNECTIONS!

Testing the Installation

Once the installation has been completed it is essential to test the unit in accordance with the latest edition of the BS7671 IET 18th Edition Wiring regulations.

Caution

Before fitting the front cover, check the tightness of all connections, including factory made connections and ensure that blanks are fitted to all unused ways.

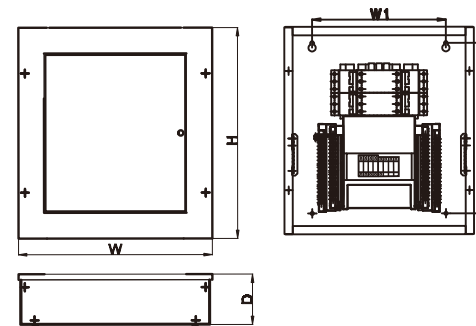
MCB/RCBO connection

1. Ensure power supply is Isolated.
2. Ensure MCB / RCBO is switched off.
3. Fully loosen all MCB / RCBO terminal screws.
4. Push MCB onto appropriate busbar outgoing way with busbar connection going into top cage as indicated on busbar way label, making sure the din clip is closed and faces towards the busbar assembly.
5. Push RCBO onto appropriate busbar outgoing way, as indicated on busbar way label, making sure the DIN clip is closed and faces towards the busbar assembly. Connect both live and neutral outgoing cable to RCBO outgoing terminals. Connect neutral lead to appropriate numbered terminal on the neutral terminal bar. Connect white functional earth lead to appropriate numbered terminal on earth terminal bar.
6. Please ensure all unused terminals are suitably insulated using the caps and blanks provided.
7. Recommended torque 2.0Nm. DO NOT USE POWER TOOL SCREWDRIVERS ON ELECTRICAL CONNECTIONS!

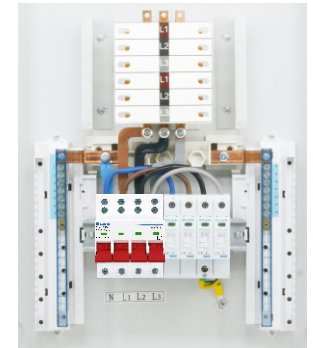
SURGE ARRESTOR

Inspect the Surge Arrestor at regular intervals and especially after severe Thunderstorms, if the Indicator Window is GREEN the unit is still functional If window has changed to RED it requires replacement and you should consult a qualified Electrician

Dimension



Wiring



Part No	Description	W (mm)	W1 (mm)	H (mm)	H1 (mm)	D (mm)	Box Qty
TPN04-125S	4 Ways with 4 Pole 125A Main Switch(Double Wiring Terminal) and 20/40 kA DP Surge Protective Device	465	321	506	409	105	1
TPN06-125S	6 Ways with 4 Pole 125A Main Switch(Double Wiring Terminal) and 20/40 kA DP Surge Protective Device	465	321	560	463	105	1
TPN08-125S	8 Ways with 4 Pole 125A Main Switch(Double Wiring Terminal) and 20/40 kA DP Surge Protective Device	465	321	614	517	105	1
TPN10-125S	10 Ways with 4 Pole 125A Main Switch(Double Wiring Terminal) and 20/40 kA DP Surge Protective Device	465	321	668	571	105	1
TPN12-125S	12 Ways with 4 Pole 125A Main Switch(Double Wiring Terminal) and 20/40 kA DP Surge Protective Device	465	321	722	625	105	1
TPN14-125S	14 Ways with 4 Pole 125A Main Switch(Double Wiring Terminal) and 20/40 kA DP Surge Protective Device	465	321	776	679	105	1
TPN16-125S	16 Ways with 4 Pole 125A Main Switch(Double Wiring Terminal) and 20/40 kA DP Surge Protective Device	465	321	830	733	105	1
TPN18-125S	18 Ways with 4 Pole 125A Main Switch(Double Wiring Terminal) and 20/40 kA DP Surge Protective Device	465	321	884	787	105	1
TPN24-125S	24 Ways with 4 Pole 125A Main Switch(Double Wiring Terminal) and 20/40 kA DP Surge Protective Device	465	321	1046	949	105	1